

Eastern Montana
Bible Camp
1862 Road 523
Bloomfield, MT 59315
www.embcamp.org

Donations & Membership Dues
C/O Connie Umuh
431 Road 523
Bloomfield MT 59315

If you will be moving, please let us know your address change.

Pre-Sorted
Standard
US Postage Paid
Bloomfield MT
Permit No. 1



Scholarships

Each year we are seeing the need for more scholarships for children to attend EMBC. We have been so blessed to have people provide scholarship money for those in need; we don't turn down any children that want to come to camp. Thank you to those that have supported camp in this way and if anyone else would like to give, we would appreciate your support. EMBC provided around 20 scholarships plus numerous ones from Awana and area churches.

Thank you
and God bless you!
EMBC Board



EMBC is a great place to rent. It has plenty of space for activities for your youth group or church. Full camp rental or partial camp rental per person. Be sure to call for availability. Check our website for current pricing.



Eastern Montana

Bible Camp

A camp for the heart & soul

2017 Camp Overview

- Man Cave: 120
- Staff training: 40
- Teen Camp: just under 70
- Junior High Camp: about 65
- Junior Camp: 115
- Pioneer Camp: 75
- Little Bugs Day Camp: 46
- Walt Durfey Memorial Ride (EMBC Motorcycle Trip): 38
- Wild West Weekend: 40-110
- Ladies Retreat: 70



Fall 2017

Many lives were impacted for Christ this summer and many discovered His love for the first time. Pastors/Youth pastors- please look for us to contact you with information to follow up with these campers! Thank you!



Amazing Grace Amazing Volunteers

Looking back on 2017, we are amazed beyond words at what God has done through Eastern Montana Bible Camp. If there is one thing we don't want to get lost in all of this is that very little could happen without the collective efforts of YOU, our members, volunteers and churches. We are so incredibly thankful that you are willing to give of your finances, time, energy and dedication to EMBC. You have all been instrumental in accomplishing what no one would have thought possible a very short time ago! THANK YOU! THANK YOU! THANK YOU! We look forward to what God will do in 2018.

"As a result of your ministry, men will give glory to God. For your generosity to them and to all believers will prove that you are obedient to the Good News of Christ. And they will pray for you with deep affection because of the overflowing grace God has given to you." (2 Corinthians 9:13-14)

"I thank my God every time I remember you. In all my prayers for all of you, I always pray with joy because of your partnership in the gospel from the first day until now ..." (Philippians 1:3-5, NIV)

Eastern Montana Bible Camp is a 501-C-3 Organization. Donations are tax deductible. Invest in heaven's kingdom! We truly appreciate your support. Donations may be sent to the address on the back of this newsletter. Thank you for considering us in Annual Support Plan.

Your EMBC Board Members



President-Marty Senner



Vice President-Field Kreiman, wife Lucy, son Asher



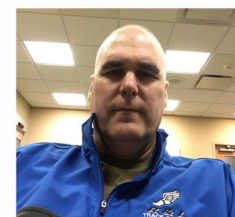
Treasurer-Connie Unruh



Secretary-Dee Jorgensen



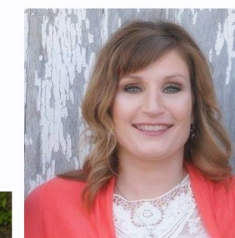
Vice Treasurer-Erin Switzer



Vice Secretary-
Pastor Paul Sponheim



Member at Large-Ann Bouchard



Member at Large-
Jennifer Fatzinger



Camp Manager-
Larry Albertson, wife Jill
Elijah & Eleanor

Please remember to pray for us. We need God's wisdom to oversee the facilities and programs with vision.



EMBC Wish List

Immediate Needs!!

- Quality Hand Tools-
Ratchets 1/4" 3/8" 1/2"
- Wrenches SAE and Metric
- Gear Wrenches SAE and Metric
- Screw drivers
- Pliers (Channel lock & Needle nose, slip joint)
- Rolling tool box

See our webpage for links to items www.embcamp.org

Grounds

- A mid-size utility tractor in good condition 40-80 horse
- Building supplies (check with us but we can always use good lumber)
- Paint brushes, rollers and drop cloths
- Pneumatic Framing nailer
- Electric Sander(s) Belt, orbit or finish.
- Multimax tool-Dremel, Fein, Rockwell, Dewalt

Office

- Regular office stapler
- Large capacity stapler

Director and Speaker Cabins/Cabins

- Commercial vacuum cleaner
- Brooms and dust pans
- Mops

Program

- Basketballs
- Kickball
- Cage Balls
- Volleyballs
- Archery arrows, targets

Other Unique Ways to Donate:

We have many consumables that if donated can greatly defray our operating expenses

- Paper towels
- Dish towels
- Dish soap
- General cleaning supplies (Bathroom, Kitchen, Bleach)
- 10w-30 motor oil
- 15w-40 motor oil
- Trans/hydraulic oil (quick-lift)
- Led Light bulbs (any size 60-100w equivalents)
- Heavy duty garbage bags

**There are many other items we can use for our ministry so let us know if you have something (or an idea) that might help our camping program.



BE A ROCK STAR

Ok, so we're not looking for your normal Rock Stars. We're looking for real people who like spending time outdoors, like hanging around kids and know that there is more to life than making money and having fun. You know, people who think God is real, miracles happen, and yes talk about Jesus. Guess what? They like to have fun too, even though it's not their top priority in life. I'm sure you've met someone like that. We happen to think they're Rock Stars. Sure, they go to work. They love their family. They like to relax on the weekend. They go church every Sunday. They're the one somebody calls when they need help. I know someone like that and they are soo busy. Do you know what makes them a rock star? They say yes to God and they volunteer. They volunteer, because they care about people. Do you know a Rock Star? Real Rock Stars are becoming rare. Maybe you're a rock star and don't even know it. Don't say, oh maybe some day I'll paint my hair purple, and learn to play the electric guitar. Plan on letting that star quality shine this summer. Say yes, I'm a rock star. Fill out an application to be camp counselor, camp cook, camp nurse, camp weed whacker, group leader, (aka rock star) for this summer. We can't wait to ROCK out with you! Applications can be found at www.embcamp.org. Oh, and don't let anyone tell you Rock Stars are weird, they're just unique.



follow us on facebook

We want to get the word out and connect with folks about what is going on at EMBC. Please like our facebook page and share posts. This helps us get the word out. Search for Eastern Montana Bible Camp.

Be an EMBC Member

Maybe you get this letter, because you're already a member. I would venture to guess you know people who go to church with that are familiar with our little camp here in the badlands, but aren't members. Its the connection with other Christian Believers that helps us to grow and stay strong. Invite them to become a member. It automatically puts you on our mailing list. Single membership is \$20. Family is \$40. See the address on the back to send in your membership.

